



Department of  
Environmental  
Conservation

# Point-Of-Entry Treatment (POET) Systems

## Hoosick Falls Area

June 2026

# Hoosick Falls Area POET Systems Timeline

## *January 27, 2016*

- Governor issues emergency regulation to classify PFOA as a hazardous substance – State Superfund Site – unlocks state resources

## *February 8, 2016*

- NYSDEC establishes emergency response and incident command post with DOH, DOS, DHS, OGS

## *February 15, 2016*

- 1st Point of Entry Treatment (POET) System installed.

## *June 2026*

- 1,058 POET Systems installed to date in the Hoosick Falls Area
  - Includes systems in neighboring Washington County



# Summary of POET Activity

## ***1,058 systems installed:***

- 20 removed at owner's request (e.g. Non-Detect water source; building removed; owner preference; etc.)

## ***An additional 642 well locations sampled that do not have a DEC POET***

- No reported PFAS concerns in the sample results, or POET was declined by the owner

## ***Of the 1,038 systems currently in place:***

- 392 routinely report Non-Detect for PFAS in the raw untreated water.
- 646 locations routinely report PFAS detections.
  - 317 locations typically report 2 to 34 ppt
  - 125 locations typically report 35 to 69 ppt
  - 204 locations typically report greater than 70 ppt

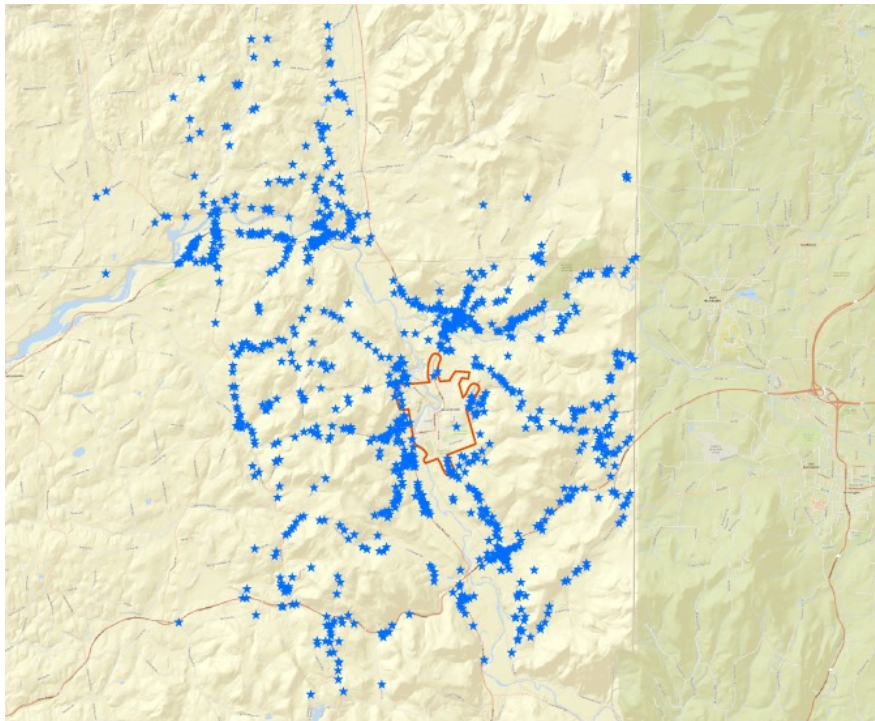


# Summary of POET Sampling & Maintenance

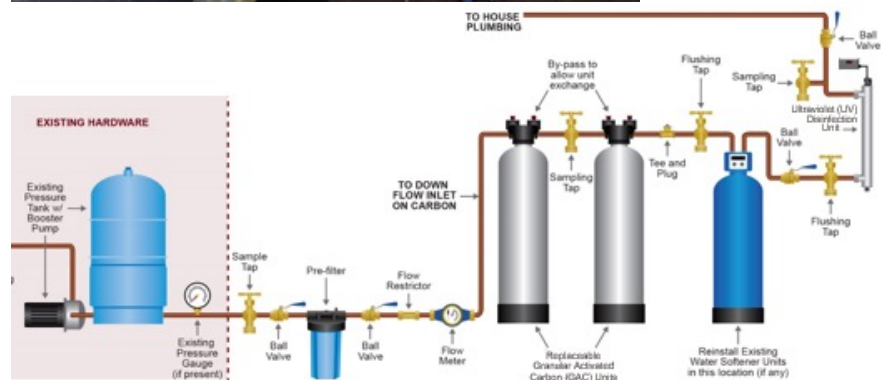
System PFOA or PFOS Concentration	Sample Frequency
Each Active System	Approximately 3 months following clearance
Greater than or equal to 70 ppt	Tri-Annually
Greater than or equal to 35 ppt and less than 70 ppt	Semi-Annually
Less than 35 ppt**	Annually
Non-Detect***	Annually

- Contractor: less than \$600/yr (ultra-violet (UV) lamp / periodic pre-filter service). Owners self-performing: less than \$300/yr.
- Carbon media replacement: several years of effective (often lasting 5 years or more). Performed by a contractor generally in the \$1,500 range.
- Required when contaminant breakthrough is observed in treated water samples, or when odor or taste concerns become apparent due to bacterial growth on aged carbon.

## General Vicinity of DEC POET Systems



## Typical POET System Configuration



**NEW YORK STATE**  
Department of  
Environmental  
Conservation

# Contact Information: Private Well Sampling Requests & POET System Maintenance

Property owners in the Hoosick area using a private well for drinking water and seeking to have their water tested, may contact:

NYSDOH

Email: [bee@health.ny.gov](mailto:bee@health.ny.gov)

Phone: 518-402-7860

DEC POET Hotline

888-459-8667

Once the request is reviewed and authorized by DOH, sampling is typically performed in coordination with DEC. Once DOH receives the laboratory analytical results, a POET may be recommended. If a POET is offered and accepted by the owner, DEC coordinates installation of the treatment system.

POET system owners in the Hoosick area may contact the DEC POET Hotline, 24/7, for any POET matter:

DEC POET Hotline

888-459-8667

The call center hotline is equipped for scheduling routine maintenance needs, responding to urgent POET equipment issues, and answering general questions from owners. Urgent needs reported during nights, holidays, and weekends are routed to an on-call team for prompt attention.



# Thank You

- David J. Chiusano
- Project Director
- NYSDEC, 625 Broadway,  
12th floor, Albany, NY
- david.chiusano@dec.ny.gov
- (518) 402-9795

## Connect with us:

Facebook: [www.facebook.com/NYSDEC](http://www.facebook.com/NYSDEC)

Twitter: [twitter.com/NYSDEC](https://twitter.com/NYSDEC)

Flickr: [www.flickr.com/photos/nysdec](http://www.flickr.com/photos/nysdec)



Department of  
Environmental  
Conservation