



BIOLOGICAL SAMPLING PLAN

Hoosick Area Community Participation Work Group
August 24, 2021

Honeywell

DRAFT



BIOLOGICAL SAMPLING

Purpose:

Evaluate potential uptake of PFAS and other chemicals from soil, surface water, and sediment into plants, earthworms, arthropods (e.g. insects, beetles), small mammals (e.g. mice), and fish that live on and near McCaffrey Street site

BIOLOGICAL SAMPLING LOCATIONS

Terrestrial (7)

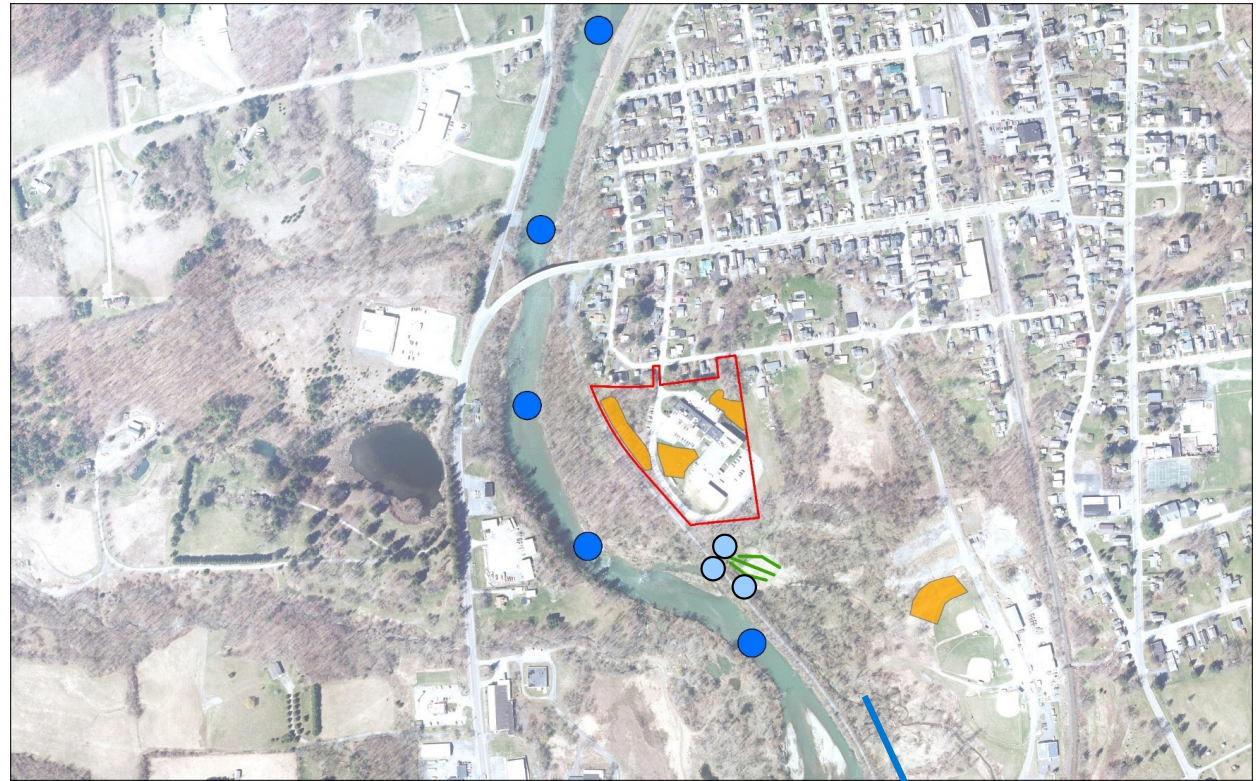
- 4 upland locations 
- 3 wetland transects 

River (6)

- One upstream
- Three near McCaffrey Street
- Two downstream

Stream (3)

McCaffrey Street parcel 



Sixth river location
~ 1 mile upstream

TERRESTRIAL SAMPLE COLLECTION

- Seven Sampling Locations
 - 4 Upland (dry)
 - 3 Wetland
- Surface soil (0 to 2 feet below ground)
- Plants (clipping leaves and stems)
- Earthworms (utilizing a sieve)
- Arthropods (e.g. beetles, pill bugs, centipedes, millipedes)
- Small mammals (e.g. mouse, shrew, vole)



Source: wikipedia



RIVER AND STREAM SAMPLING

River: six locations

- Surface water samples
- Sediment samples (0 – 2 feet below bottom of river)
- Aquatic macroinvertebrates (e.g. crayfish)
- Aquatic plants (about 100 grams)
- Small, medium and large fish



Stream: three locations

- Surface water samples
- Sediment samples (0 – 2 feet below bottom of stream)
- Aquatic macroinvertebrates (e.g. crayfish)
- Aquatic plants (about 100 grams)



PLANNED SAMPLING SUMMARY

Biological Sample Type	Upland	Wetland	In-River	Stream
Herbaceous Plants	●	●		
Soil invertebrates – Arthropods	●	●		
Soil invertebrates – earthworms	●	●		
Small mammals	●	●		
Aquatic Plants			●	●
Aquatic macroinvertebrates			●	●
Fish (small, medium, large)			●	
Non-biological Sample Type				
Soil	●	●		
Surface Water			●	●
Sediment			●	●

CHEMICAL TESTING OF SAMPLES

Samples will be tested using EPA methods for:

- PFAS
- Metals
- PCBs
- PAHs

SCHEDULE

Preparation in July

- Ordering supplies, scheduling staff, and coordinating with NYSDEC and various stakeholders

Field work from late August through early Fall (schedule is approximate)

- One week of collecting non-biological samples
 - Soil, surface water, sediment
- Two weeks of collecting biological samples on land and stream
 - Plants, arthropods, small mammals
- Two weeks of collecting biological samples in river

Information will be reported to NYSDEC in early 2022